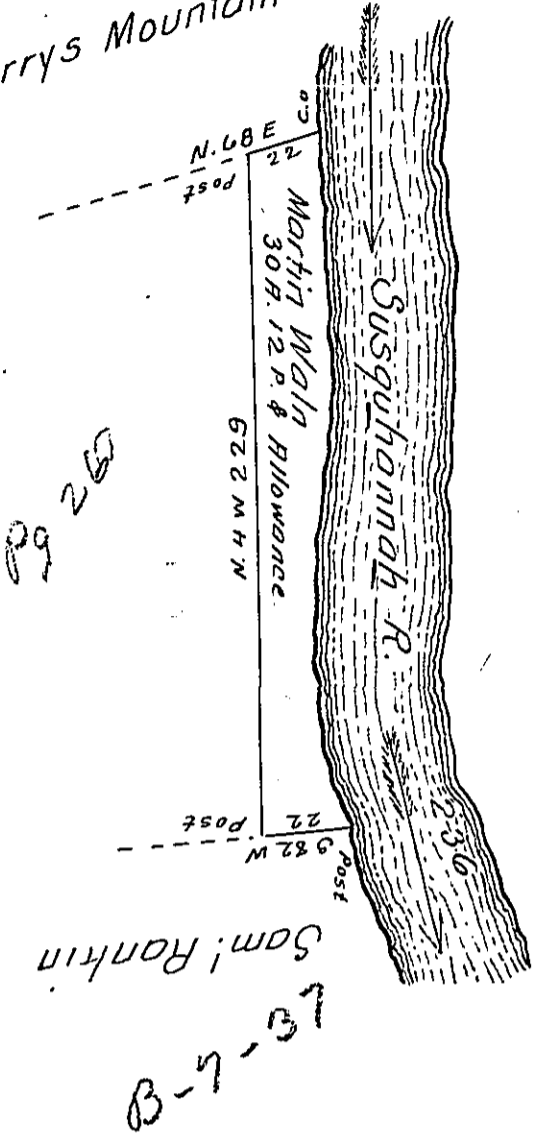


Berrys Mountain



Courses & Distances of
Sisquahanah -

S. 16. E. 14
S. 5. E 20
South 136
S. 4. E 46
S. 26 E 20
236

The Draught of a tract of land situate in Greenwood Township (now Buffalo) Cumberland County. Containing thirty acres 12 perches & Allowance. Surveyed the 19th March 1817 in pursuance of a warrant granted Martin Wain dated the 27th May 1772.

I Certify the above to be a true Copy of a Draft Remaining on file in the Depy Surveyors Office Jan'y 17th 1820.

To Jacob Spangler Esq. } W. Wilson D.S.
Surveyor General

IN TESTIMONY that the above is a copy of the original remaining on file in the Department of Internal Affairs of Pennsylvania, made conformably to an Act of Assembly approved the 16th day of February, 1833, I have hereunto set my Hand and caused the Seal of said Department to be affixed at Harrisburg, this fourteenth day of September 1906.

Loach B. Brown
Secretary of Internal Affairs.